



JSPS
 (Japan Society for the Promotion of Science)
 -Japan's Research Funding Agency-
 Polly Watson
 International Programme Coordinator
 Japan Society for the Promotion of Science (JSPS)
 January 2012

Introduction of JSPS

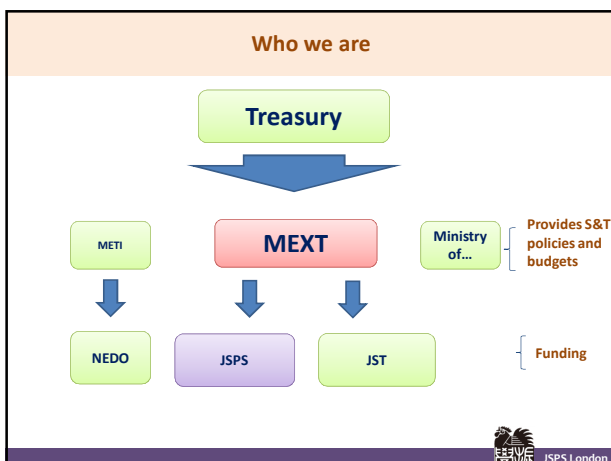
Japan Society for the Promotion of Science
 日本学術振興会

- Established through an endowment by Emperor Showa in 1932




Rooster:
 Harbinger of new knowledge that promises a brilliant future for humankind.

JSPS London



What we do

Japan Society for the Promotion of Science

- **Funding research initiatives**
 Competitive research funding: Grants-in-Aid
- **Fostering next generation of scientists**
 Research fellowships for young scientists
- **Promoting university reform**
 Joint programs with Ministry of Education and Science
- **Advancing international collaborations**
 Collaborations with overseas partners

JSPS London

The facts

We have annually supported **59,000** projects Through Grants

2.3 billion EURO distributed


25% Success Rate

We have annually supported **6000** Foreign Researches -> Japan

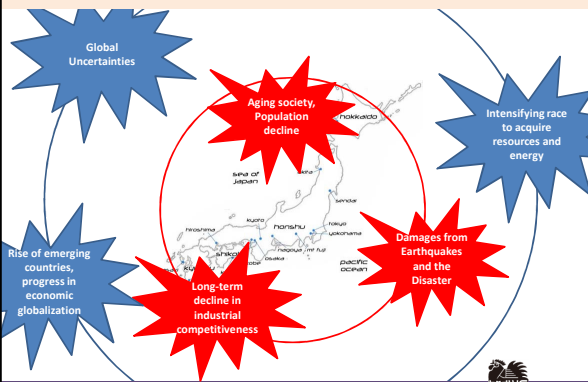
8500 Japanese Researchers -> Abroad

We have annually supported international collaboration **500** Research Projects/Seminars Through Bilateral Exchanges scheme

90 Research Hubs Through Multilateral Collaborations Scheme



Rapidly changing world and Japan's crises



Global Uncertainties


Intensifying race to acquire resources and energy

Aging society, Population decline

Long-term decline in industrial competitiveness

Damages from Earthquakes and the Disaster

Rise of emerging countries, progress in economic globalization



Japan's The 4th Basic Plan for S&T

19 August 2011


Addressing key challenges and promoting efforts to enhance Japan's basic research and human resources development as "two wheels of one cart."

Addressing key challenges facing Japan

- 1.Rebuild from the disaster
- 2.Green Innovation
- 3.Life Innovation

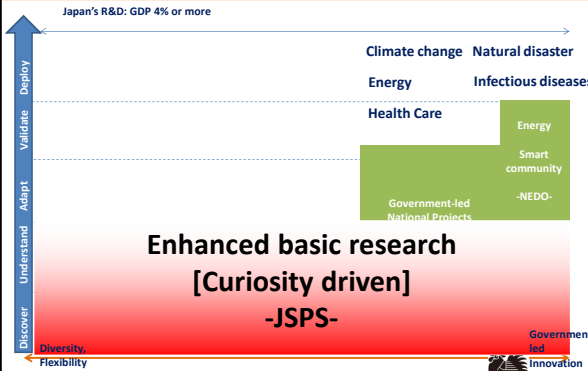
Enhancement of basic research and human resources development

- 1.Enhancing creative and diverse basic research(Further expansion of scientific research subsidies)
- 2.Enhancing globally top-level basic research



Where we are, and our funding approach

Japan's R&D: GDP 4% or more



Climate change Natural disaster

Energy Infectious diseases

Health Care

Energy Smart community -NEDO-


Government-led National Projects

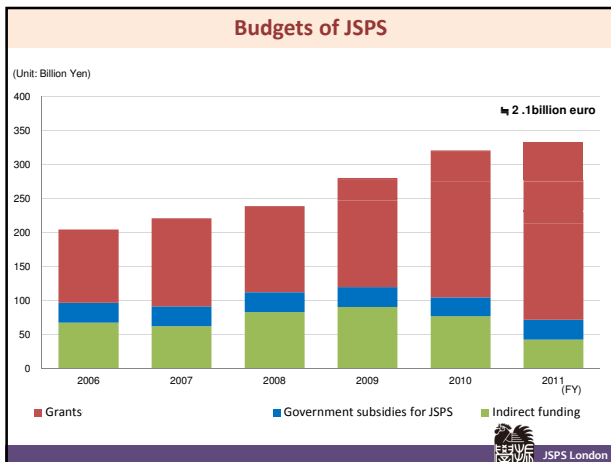
Enhanced basic research [Curiosity driven] -JSPS-

Government-led Innovation

Discover Understand Adapt Validate Deploy

Flexibility Innovation

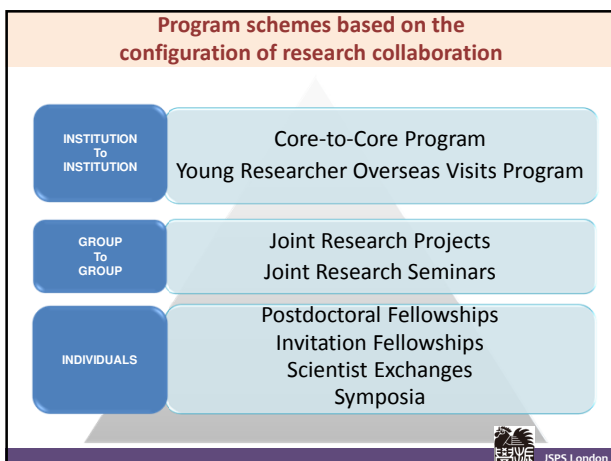




What kind of Programmes does JSPS run to facilitate international collaboration?

WHAT DOES JSPS DO FOR INTERNATIONAL COLLABORATION?

JSPS London



Collaboration between Institutions

•Projects receive annual funding from about 160,000 EURO per year for up to 5 years.

•JSPS currently supports 7 projects with UK research institutions.

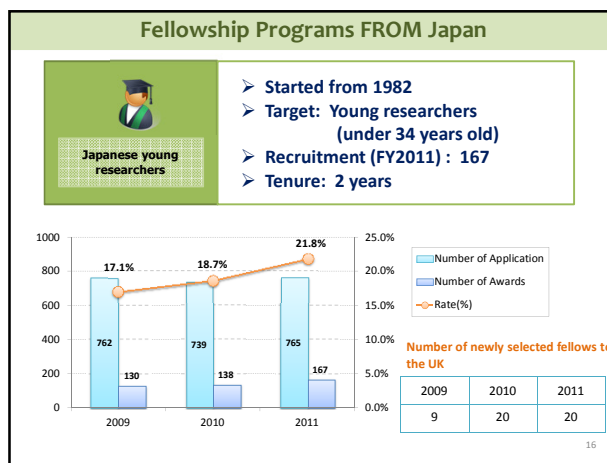
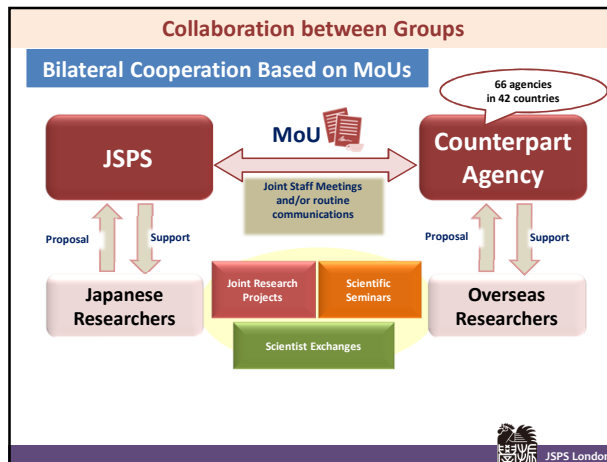
- Culham Science Centre
- The University of Manchester
- The University of Southampton (x2)
- Rutherford Appleton Laboratory
- The University of Edinburgh
- The University of Aberdeen


JSPS London

Collaboration between Institutions

Duration	Research Theme	Core Institute in Japan	Partner Research Institute in UK	Partner Research Institutes except UK
2010/4/1-2012/3/31	centre for Magnetic Self- Organization in Laboratory and Astrophysical Plasmas	The University of Tokyo	Culham Science centre	*Princeton University(USA) *University of Padova(Italy)
2010/4/1-2012/3/31	Photolionisation- induced switch in aromatic molecule- solvent recognition	Tokyo Institute of Technology	The University of Manchester	*Technical University of Berlin (TU Berlin)(Germany)
2009/4/1-2012/3/31	International Research Network for Dark Energy	The University of Tokyo	University of Edinburgh	*Princeton University(USA) *Institute for Astrophysics at Paris(France)
2009/4/1-2012/3/31	High Energy Density Science	Osaka University	Rutherford Appleton Laboratory	*Ecole Polytechnique(France) *University of California San Diego(USA)
2009/4/1-2012/3/31	centre for Magnetic Resonance: Molecular imaging of in vivo Redox System	Kyushu University	University of Aberdeen	*The Ohio State University(USA) *Monash University(Australia) *Martin Luther University of Halle-Wittenberg(Germany) *Chinese Academy of Science(China)
2010/4/1-2013/3/31	Studies on Ecological Interaction Networks that Promote Biodiversity—from Gene to Ecosystem	Kyoto University	Rothamsted Research, Southampton University	*University of Amsterdam(Netherlands) *The University of Western Ontario(Canada) *Max Planck Institute of Chemistry(Germany) *Free University of Berlin(Germany) *University of Minnesota(USA) *University of Turin(Italy) *University of Nuremberg(Germany)
2009/4/1-2014/3/31	Collaborative Research centre on Ultrahigh-speed Optical Communication	Tohoku University	University of Southampton	*Heinrich Heertz Institute(Germany) *Technical University of Denmark(Denmark)


13
JSPS London





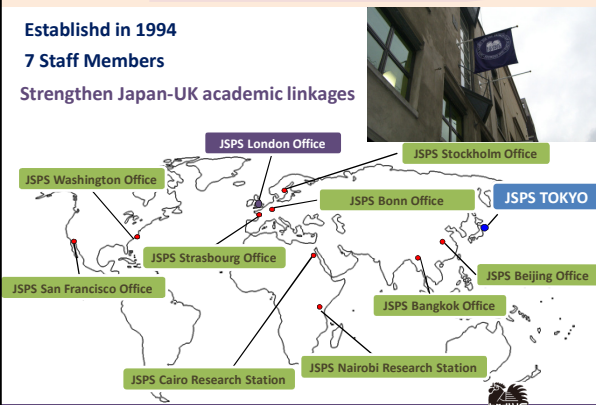

What kind of linkages are JSPS London helping to maintain and Build?
What does JSPS London do on a day-to-day basis?

HOW DOES JSPS LONDON FIT IN?



JSPS London Collaborations with overseas partners

Established in 1994
7 Staff Members
Strengthen Japan-UK academic linkages

What do JSPS London do on a day-to-day basis?

FY2010 We organise a number of academic symposia

- "Ageing" (Joint Symposium with Economic Social Research Council, 28-29 Mar)
- "Mitochondria- from the Fundamental Aspects to Medical Importance" (Joint Symposium with UCL, 10 Feb 2011)
- "Catalysis and Sensing for Health" (Joint Symposium with University of Bath, 31 Jan-2 Feb 2011)
- "Sports Technology: Engineering the future of sport" (Joint Symposium with Loughborough University, on 23-25 Febr)

FY2011

- "Magnetic Materials and Spintronics" (Joint Symposium with University of York, on 27-29 June 2011)
- "The Cornea and Tissue Engineering" (Joint Symposium with Cardiff University, on 18-19 Aug 2011)
- "Risky engagements: encounters between science, art and public health" (Joint Symposium with University of Manchester, on 5-7 Jan 2012)
- "Interdisciplinary Approach to Senescence Study" (Joint Symposium with Cancer Research UK, on 10-11 Feb 2012)



Programme Information Event


JSPS London carries out between 10 to 15 visits to universities across the UK each year

Programme information events

- 27 Jan 12/ National University Ireland, Galway
- 26 Jan 12 / University College Cork, Ireland
- 09 Nov 11/ Dundee University
- 08 Nov 11/ University of the Highlands, Perth Campus
- 07 Nov 11/ Roslin Institute, University of Edinburgh
- 26 Oct 11/ Birmingham University
- 18 Oct 11/ Sussex University
- 14 Oct 11/ Bristol University
- 13 Oct 11/ University of Wales Trinity Saint David at Lampeter
- 11 Oct 11/ London School of Hygiene and Tropical Medicine
- 30 Sep 11/ Aston University



UK-JSPS Alumni Association




Established in 2003

Open to all former JSPS fellows (250+members)

Recent Activities (June 2010):
Pre-Departure Seminar & Alumni Evening

Opportunities to revisit Japan for research
~Expanding UK – Japan Academic Linkage~

- JSPS London FURUSATO Award (2008-)...Short-term visit
- BRIDGE Fellowship (2009-)...14 – 60days visit
- Symposium Scheme for the UK-JSPS Alumni Association (2010-)



Thank you.

GOURMET



OUTDOOR



TRADITIONAL



COOL



Polly Watson
 International Programme Coordinator
 Japan Society for the Promotion of Science (JSPS), London
 14 Stephenson Way, London, NW1 2HD, United Kingdom
 Tel: +44 (0)20 7255 4660 E-mail: polly@jps.org

 Find us on
Facebook

